

# Status Display Tool Manual (RX1-Information Ver.1.00)

Dec 18, 2015  
Dai Nippon Printing Co., Ltd.



The copyrights for this document are the property of the holders of rights. Reproduction of any or all of the contents is prohibited.



The contents of this document may be changed without prior notice.



If the contents of this sample program are used on your system, there is no guarantee of their operation. Further, this company shall not be held responsible for any damages, direct or indirect, caused through use of the sample program.

## 1. Outline

This manual is an explanation of the Status Display Tool. The Status Display Tool is a tool to get and display various pieces of information from the DS-RX1 printer.

The tab names, number of tabs, and information in the tabs shown in the diagrams in this manual may differ from what appears, depending on the customer's operating environment.

This Tool can be used with Version 1.0.0.0 or later drivers.

## 2. Operating Environment

Microsoft .NET Framework (Version 2.0 and later)

If you use in Windows XP or Windows 8 is necessary to install the Microsoft .Net Framework 3.5 SP1. In Windows VISTA or Windows 7, .Net Framework has been installed in the standard. .Net Framework can be downloaded from following URL. Details are described in URL (As of Dec 2015).

- Microsoft .Net Framework 3.5 SP1 download (Windows XP or Windows 8)

<http://www.microsoft.com/en-us/download/details.aspx?id=22> (English)

<http://www.microsoft.com/ja-jp/download/details.aspx?id=22> (Japanese)

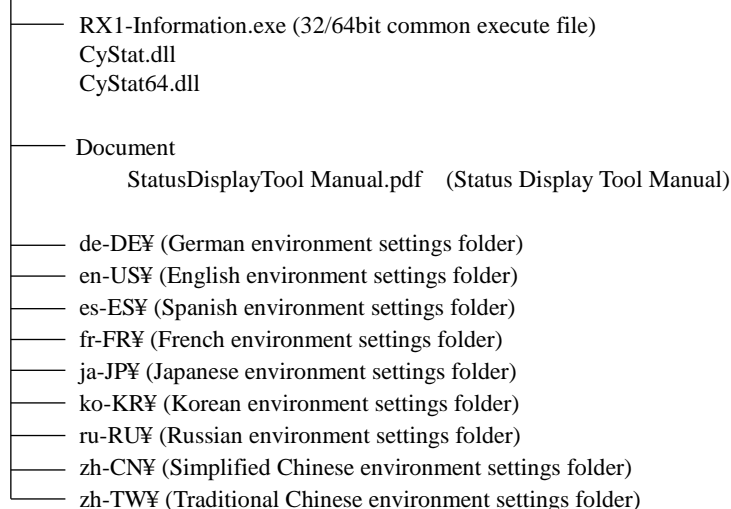
※The URL may be changed.

## 3. Folder Structure

The file structure is as shown below.

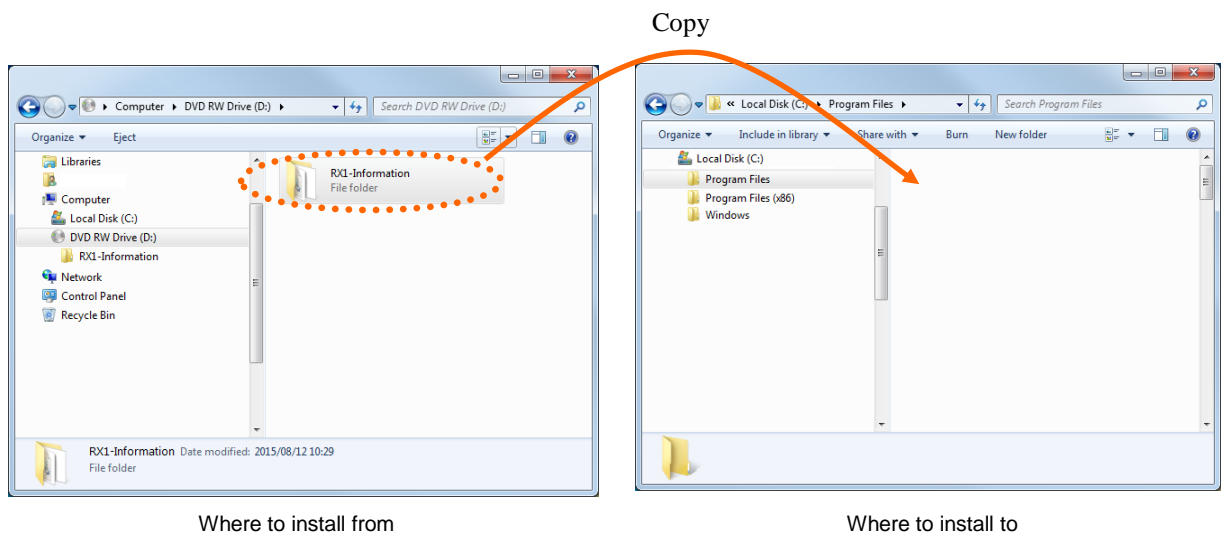
<Folder Structure>

¥¥RX1-Information¥¥ (installation folder)



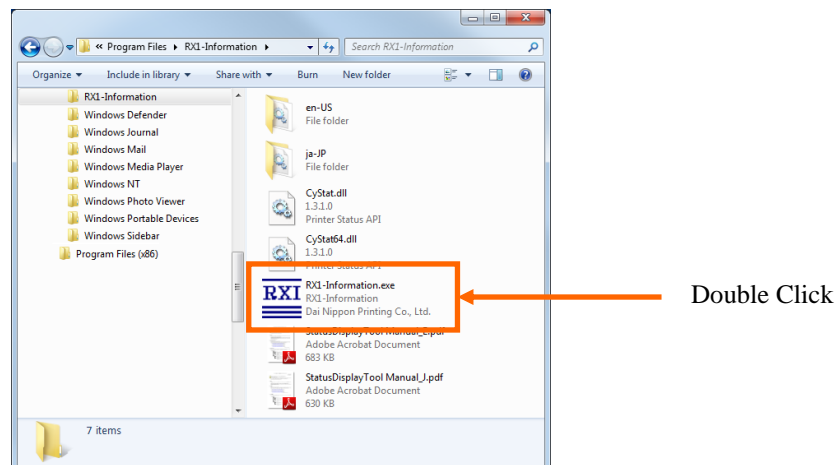
## 4. How to Install

- (1) Copy the install folder to the desired location.  
In order to uninstall, please delete the copied folder.



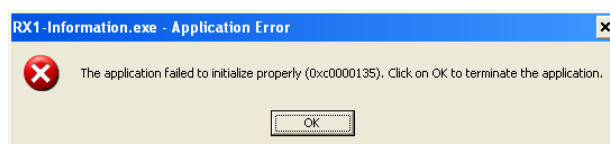
## 5. How to start the Tool

- (1) Connect the computer and printer with the USB cable, and turn them both ON.
- (2) Run the “RX1-Information.exe” in the folder you installed.

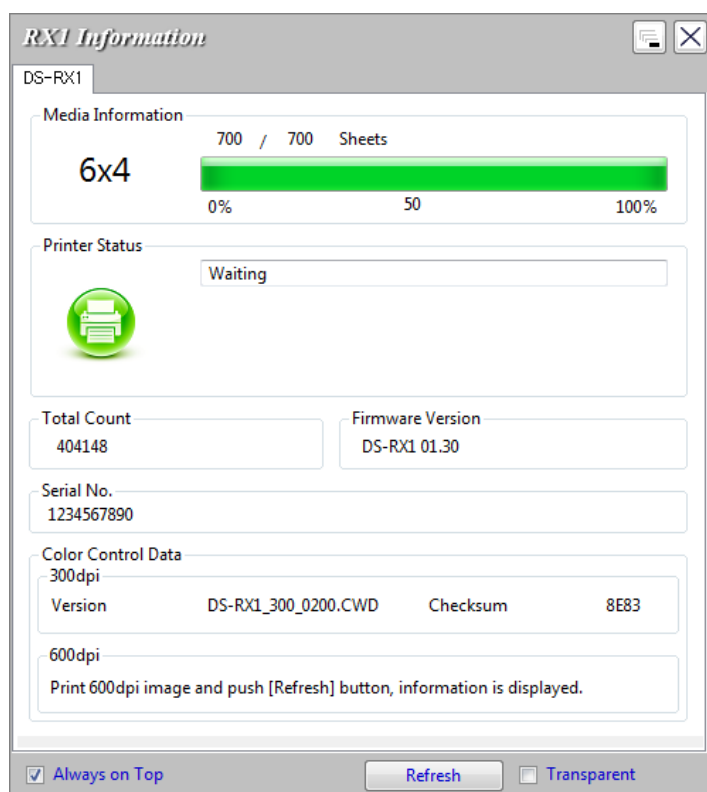


### Note

If the Microsoft .NET Framework (Version 2.0 or later) is not successfully installed, the following error message will appear. In this case, please install the Microsoft .NET Framework (Version 2.0 or later).



- (3) The Status Display Tool will run as shown below, and the printer information will be displayed. Also, the Tool icon will be displayed in the task tray.



Status Display Tool

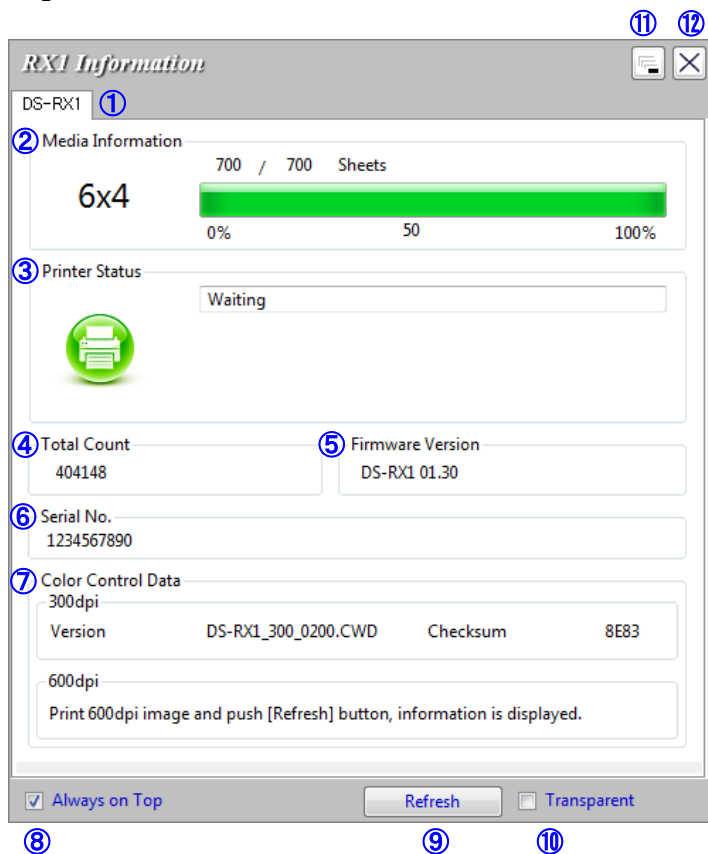


Task Tray Icon










## Note








- If no printers are connected, or the printer is not turned ON, no tab will be shown, and there will be no information displayed. Please check for printer connection and power, and restart the Tool.
- If the Tool is run while there is a print job in the spooler, “Printer Status” will show “Printing (sending data)”, and no other information will be gotten. When the print job is done, the printer information will be gotten and the display will be updated.
- This Tool cannot be run more than once at a time.
- While running the Tool, tabs will not appear for newly added or started printers, so their status cannot be checked. In order to display a tab, either click on the Refresh Button or restart the Tool.
- If a USB cable is disconnected or a printer turned OFF while running the Tool, the printer status for that printer will change to “Offline”, and the other information boxes will be blank. The information will be displayed again if the USB is reconnected or the printer turned back ON. In order to delete the tab of a disconnected printer, either click on the Refresh Button or restart the Tool.

## 6. Explanation of Items in the Window



The following section shows the information displayed in the Printer Select tab.

No	Display item	Display details												
①	Printer Select tab	Select the tab of the printer to be used.												
②	Media Info	This area shows, for example, the size and remaining number of printable sheets for the ribbon media in the printer.												
③	Printer Status	<p>Displays the status of the printer using icons and characters.</p> <table border="1"> <thead> <tr> <th>Display icon (Color)</th><th>Display characters</th><th>Status/Response</th></tr> </thead> <tbody> <tr> <td> (Green)</td><td>Waiting</td><td>Printing is possible.</td></tr> <tr> <td> (Blue)</td><td>Printing</td><td>The printer is printing.</td></tr> <tr> <td> (Yellow)</td><td>Door open</td><td>Front door is open. Close the front door.</td></tr> </tbody> </table>	Display icon (Color)	Display characters	Status/Response	 (Green)	Waiting	Printing is possible.	 (Blue)	Printing	The printer is printing.	 (Yellow)	Door open	Front door is open. Close the front door.
Display icon (Color)	Display characters	Status/Response												
 (Green)	Waiting	Printing is possible.												
 (Blue)	Printing	The printer is printing.												
 (Yellow)	Door open	Front door is open. Close the front door.												

No	Display item	Display details		
③	Printer Status	Display icon (Color)	Display characters	Status/Response
		 (Yellow)	Ribbon end	No ribbon remains. Load new media. (Replace the paper and ribbon as a set.)
		 (Yellow)	Paper end	No paper remains. Load new media. (Replace the paper and ribbon as a set.)
		 (Gray)	Offline	The printer cannot be recognized. Connect the printer and computer, and then turn on the power.
		 (Purple)	Cooling head	The head is being cooled. Please wait a while. Printing will resume automatically.
		 (Orange)	Ribbon error	The ribbon is not set correctly. Reload the ribbon properly.
		 (Orange)	Paper size setting error	The printer settings and size of the installed ribbon do not match. Check the paper size setting and ribbon size.
		 (Orange)	Paper jam	A paper jam was detected. Remove the paper and reload it properly.
		 (Red)	System error	System error. Restart the printer and computer. If the printer does not recover after the restart, contact the service center.

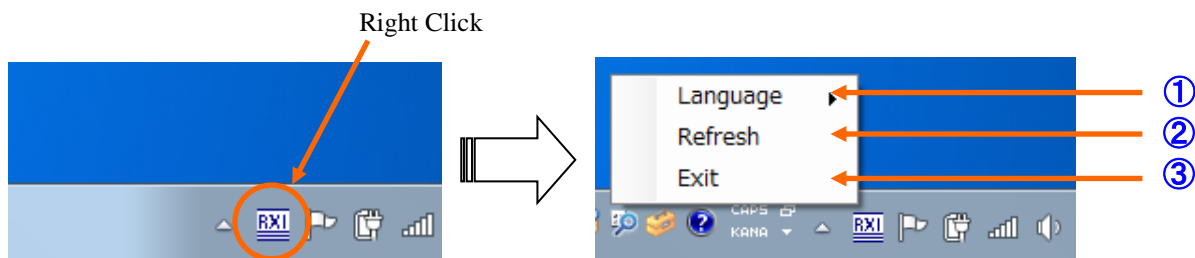
No	Display item	Display details
④	Total Count	Total count of printed sheets (printing other than 6x4 or 5x3.5 size will count as two sheets).
⑤	Firmware Version	Version of the control program of the printer. xx.xx indicates the version. •DS-RX1 xx.xx
⑥	Serial No.	Serial number of the printer.
⑦	Color Control Data	Printer color control data.
⑧	Always on Top	When this is checked, the window always stays on top.
⑨	Refresh Button	This refreshes the printer connection information. If a new printer is added or turned ON while the Tool is in operation, clicking on this button will get and display the information from the connected printer.
⑩	Transparent	When this is checked, the window becomes semi-transparent.
⑪	Minimize Button	This minimizes the window and shows it in the task tray. Double-clicking on the task tray icon will return the window to its normal display size.
⑫	Exit Button	This closes the Tool.

#### ■Remarks

Each piece of information is updated in a 1 second cycle. If a print job enters the spooler, the printer status will show “Printing (sending data)”, and the other information will not be updated. When the job leaves the spooler, the information will be updated.

## 7. Task Tray Icon Menu

By placing the cursor over the task tray icon and right-clicking on it, the following items will be displayed.  
(Windows XP will be displayed in English.)

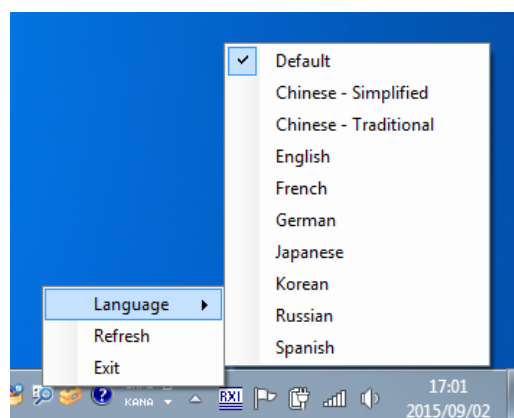


### ① Language

Change the display language for this tool's each items.

[Available languages]

- Chinese (People's Republic of China)
- Chinese (Taiwan)
- English (US)
- French (France)
- German (Germany)
- Japanese
- Korean
- Russian (Russia)
- Spanish (Spain)



When your operating system environment corresponds with one of the above settings, the default display language is the language of the corresponding country. Furthermore, when your operating system environment does not correspond with one of the above settings, the default display language is English.

To use a language different from that of your operating system, you must install the following font for the corresponding language.

Language	Font	
	Windows XP	Windows Vista ~
Japanese	MS UI Gothic	Meiryo UI / Yu Gothic UI
English (US)	Arial	Segoe UI
French (France)	Arial	Segoe UI
German (Germany)	Arial	Segoe UI
Russian (Russia)	Arial	Segoe UI
Spanish (Spain)	Arial	Segoe UI
Korean	Gulim	Malgun Gothic
Chinese (People's Republic of China)	SimSun	Microsoft YaHei
Chinese (Taiwan)	PMingLiU	Microsoft JhengHei

### ② Refresh

This will update the printer connection information.

If a new printer is connected or turned ON while running the Tool, click on “Refresh” to enable the display of information for the new printer.

### ③ Exit

This will close the Tool.

## 8. Closing the Tool

To close the Tool, either click on the Exit Button in the window, or click on “Exit” in the menu from the task tray icon.

